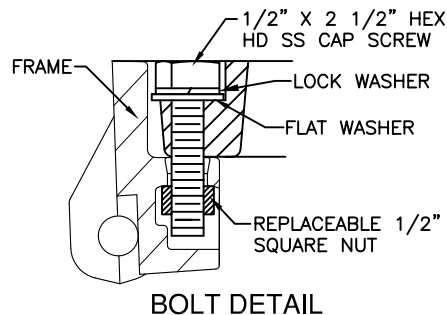
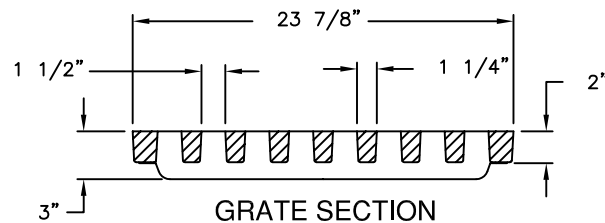
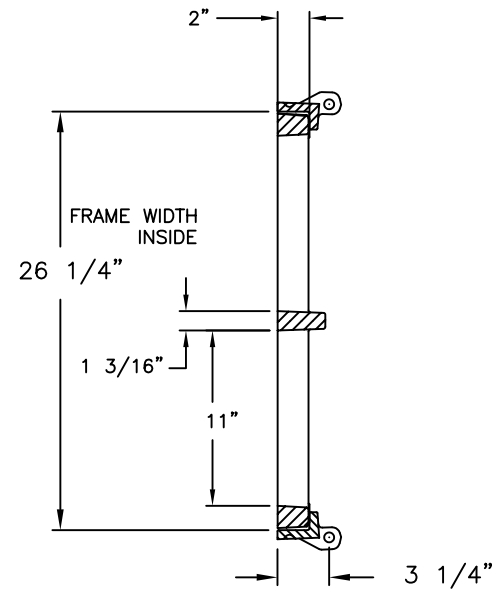
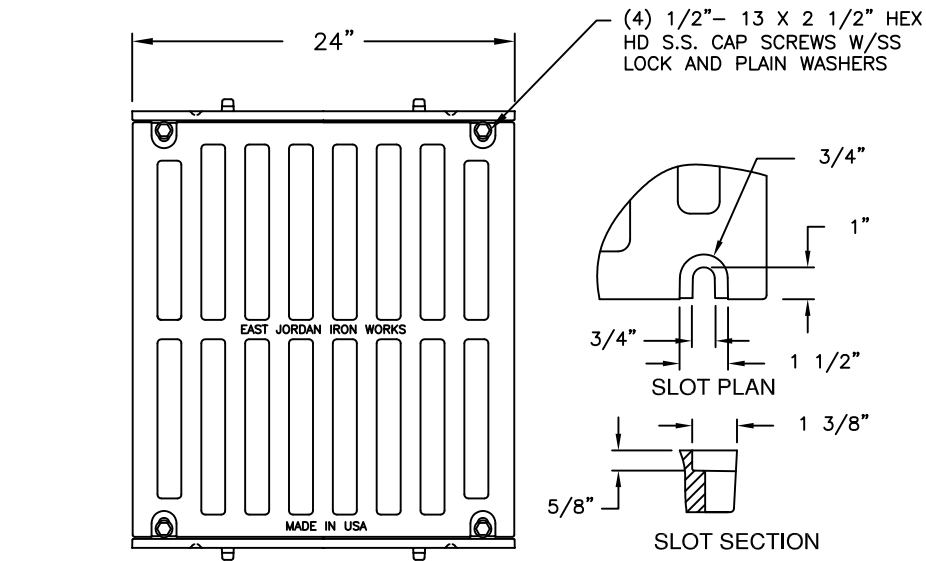


6900 6908 Assembly

Supplied By:

**TRENCHDRAIN
SUPPLY**

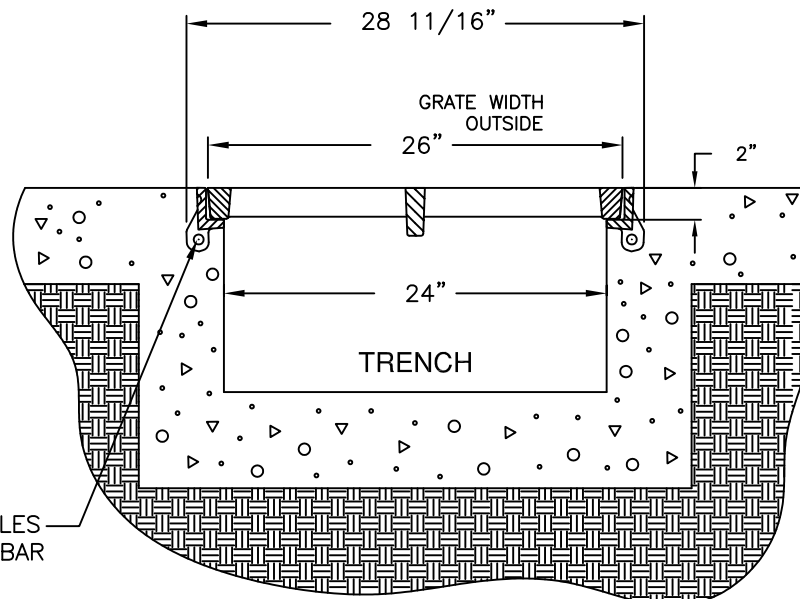
877-903-7246
www.trenchdrainsupply.com



BOLT DETAIL

CAUTION: DO NOT DISASSEMBLE BOLTED GRATES AND CHECK FRAME WIDTH INSIDE BEFORE SETTING SECTIONS IN CONCRETE.

5/8" DIA HOLES FOR #3 REBAR



Product Number

00690804

Design Features

- Materials
 - Trench Rail
 - Gray Iron (CL35)
 - Trench Grate
 - Gray Iron (CL35)

- Design Load
 - Heavy Duty
- Open Area
 - 216 SQ. INCHES
- Coating
 - Undipped
- √Designates Machined Surface

Certification

- ASTM A48
-
- Country of Origin: USA

Major Components

00690013
00690842

Drawing Revision

07/26/2004 Designer: DEW
03/29/2012 Revised By: DJH

Disclaimer

Weights (lbs./kg) dimensions (inches/mm) and drawings provided for your guidance. We reserve the right to modify specifications without prior notice.

CONFIDENTIAL: This drawing is the property of EJ GROUP, Inc., and embodies confidential information, registered marks, patents, trade secret information, and/or know how that is the property of EJ GROUP, Inc. Copyright © 2011 EJ GROUP, Inc. All rights reserved.

Contact

800 626 4653
ejco.com